

AVAILABLE AT:



THE

NEXT

COLLECTION | MULTIRESIDENTIAL



2023

CABINET SPECIFICATIONS

WALL CABINETS



01 CABINET END PANELS

Industry leading box color selection with 5/8" industrial grade particle core or 3/4" plywood core. Available with finished ends integrated in the cabinet side, built with the same finish as the doors/drawer fronts with an additional cost. Unfinished sides are the same color as the box selection.

02 WALL CABINET TOP & BOTTOM

Cabinet top and bottom are solidly fixed in place with water based pre-glued dowels to ensure maximum rigidity and minimum environmental impact. Same color as box selection. Finished option available as shown on model with extra cost.

03 CABINET BACK

Full back with a thickness of 5/8" or 3/4", solidly held in place with grooves on each side of the cabinet with furniture grade nails and hot melted adhesive.

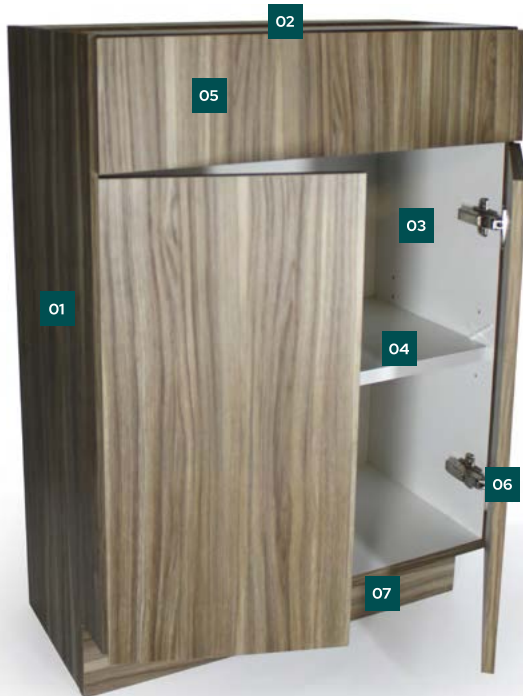
04 ADJUSTABLE SHELVES

Shelves are full depth and 5/8" thickness for maximum rigidity. All shelves have 3 levels of adjustment and cabinet box matching edgebanding color on front face. Set on metal pins.

05 HARDWARE

Heavy duty. High quality steel fabrication, 6 way adjustable, 110 degree opening with integrated self & soft closing feature.

BASE CABINETS



01 CABINET BOX & FINISH ENDS

Industry leading box color selection with 5/8" industrial grade particle core or 3/4" plywood core. Available with finished ends integrated in the cabinet side, built with the same finish as the doors/drawer fronts with an additional cost. Unfinished sides are the same color as the box selection.

02 BASE CABINET TOP & BOTTOM

Cabinet stretchers and floor are solidly fixed in place with water based pre-glued dowels to ensure maximum rigidity and minimum environmental impact. Same color as box selection. Finished top available as shown on model with extra cost.

03 CABINET BACK

Full back with a thickness of 5/8" or 3/4", solidly held in place with grooves on each side of the cabinet with furniture grade nails and hot melted adhesive.

04 ADJUSTABLE SHELVES

Shelves are 5/8" thickness for maximum rigidity. All shelves have 3 levels of adjustment. Set on metal pins.

05 DRAWERS

Widest selection of drawers on the market to match your needs and budget.

06 HARDWARE

Heavy duty. High quality steel fabrication, 6-way adjustable, 110 degrees. Opening with integrated self & soft closing feature.

07 TOE KICK

Industry standard toe kick at 4 1/2" height and installed on site for a perfect finishing touch.

BOX SELECTIONS

NXB WHITE MELAMINE

\$



5/8" White melamine

NXM MAPLE MELAMINE

\$



5/8" Maple melamine

NXX WALNUT PRINT MELAMINE

\$\$



5/8" Walnut print melamine

NXG ANTHRACITE GREY MELAMINE

\$\$



5/8" Anthracite grey melamine

Please note that products are organized from lowest to highest price level in all categories.

BOX SELECTIONS

NXK BLACK MELAMINE

\$\$



5/8" Black melamine

NXW NATURAL BIRCH

\$\$\$



3/4" UV cured, natural birch plywood NAUF
No Added Urea Formaldehyde

DRAWER SELECTIONS

M34 MELAMINE SILENT DRAWER (3/4) \$

Matching box construction color, 5/8" (16 mm) melamine sides, front and back with stapled joinery, 5/8" (16 mm) bottom. Quadro 25° by Hettich® 3/4 extension, undermount with soft closing system.



MES MELAMINE SILENT DRAWER (FULL) \$\$

Matching box construction color, 5/8" (16 mm) melamine sides, front and back with stapled joinery, 5/8" (16 mm) bottom. Quadro V6° by Hettich® full extension, undermount with soft closing system.



WOS WOOD PINNED DRAWER \$\$\$

9/16" (15 mm) Solid wood birch sides and back with stapled joinery. 1/4" (6 mm) Bottom. Quadro V6° by Hettich® full extension, undermount with soft closing system.



AYW WHITE AVANTECH YOU \$\$\$\$

Hettich® Avantech YOU® thin-walled drawer system with 5/8" (16 mm) melamine back and bottom, metal sides. (W) White finish. Quadro V6° by Hettich® full extension, undermount with soft closing system.



AYG GREY AVANTECH YOU \$\$\$\$

Hettich® Avantech YOU® thin-walled drawer system with 5/8" (16 mm) melamine back and bottom, metal sides. (G) Anthracite grey finish. Quadro V6° by Hettich® full extension, undermount with soft closing system.



DOVS DOVETAIL BIRCH DRAWER \$\$\$\$\$

Dovetail assembled 9/16" (15 mm) solid wood birch sides with 3/8 plywood bottom. Quadro V6° by Hettich® full extension, undermount with soft closing system.



DOOR SELECTIONS

25 LASALLE

SLAB MELAMINE



AVAILABLE IN GROUP 00, 01 AND 02

Slab style door and drawer front are produced from 5/8" melamine material with finished 0,5 mm PVC edge.

28 VERDUN

SLAB MELAMINE



AVAILABLE IN GROUP 00, 01 AND 02

Slab style door and drawer front are produced from 5/8" melamine material with finished 1,0 mm PVC edge.

DOOR SELECTIONS

FINISH SELECTIONS FOR DOOR 25 AND 28

CLASSIC SERIES FINISHES

GROUP 00



Blizzard
CI00-0000

Chanterelle beige
CI00-0001

Sketch
CI00-0002

Crosshatch
CI00-0003

Basalt Gray
CI00-0004

Lava
CI00-0005

Black Pepper
CI00-0006

Black Denim
CI00-0007

Roma Antica
CI00-0014

Cotton Plant
CI00-0017



Night Owl
CI00-0018

BENCHMARK SERIES FINISHES

GROUP 01



Dried Mushroom
CI01-0001

Sea Salt
CI01-0002

Rainy Day
CI01-0003

Call of the Loon
CI01-0005

Industrial Gray
CI01-0006

Linden infusion
CI01-0007

Camel Hair
CI01-0008

Brunette
CI01-0009

Chocolat Bark
CI01-0010

Umber
CI01-0011



Charcoal Line
CI01-0012

City Barn
CI01-0013

Rain Forest
CI01-0014

Nunavut
CI01-0015

Darkroast Coffee
CI01-0016

Yak
CI01-0017

TRUEWOOD MELAMINES FINISHES

GROUP 02



Goose Down
CI02-0001

Snow Storm
CI02-0002

Winter Cottage
CI02-0003

Dawning
CI02-0004

Artichoke
CI02-0005

Teak Taupe
CI02-0006

Jazz
CI02-0007

Holiday Lodge
CI02-0008

Cedar
CI02-0009

Ginseng
CI02-0010



Log Cake
CI02-0011

Sea Shore
CI02-0012

Downpour
CI02-0013

Cracked Clay
CI02-0014

Outline
CI02-0015

Wild Mushroom
CI02-0016

Butternut
CI02-0017

Shitake
CI02-0018

Clayish
CI02-0019

Lava Stone
CI02-0020

DOOR SELECTIONS

30 MONDOLFO

SLAB POLYMER - HIGH GLOSS



POLYMER FINISHES

GROUP 03



White HG*
CI03-0001



Sumu HG
CI03-0002



Savu HG
CI03-0003



Black HG*
CI03-0004

Slab style door and drawer front are produced from 3/4" Polymer High Gloss pre-finished material with 1,0 mm matching edge.

*Back of the door is melamine match

31 GRADARA

SLAB POLYMER - MATTE/SATIN



POLYMER FINISHES

GROUP 03



White Satin*
CI03-0005



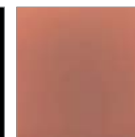
Sumu Satin
CI03-0006



Savu Satin
CI03-0007



Black Satin*
CI03-0008



Clay Satin
CI03-0009



Mink Satin
CI03-0010



Ocean Blue Satin
CI03-0011



Blue Notte Satin
CI03-0012



Magnolia Satin
CI03-0013



Relax Green Satin
CI03-0015



New Grey Satin
CI03-0014

Slab style door and drawer front are produced from 3/4" Polymer Satin pre-finished material with 1,0 mm matching edge.

*Back of the door is melamine match

DOOR SELECTIONS

700 CORDOBA

SLAB THERMOFOIL

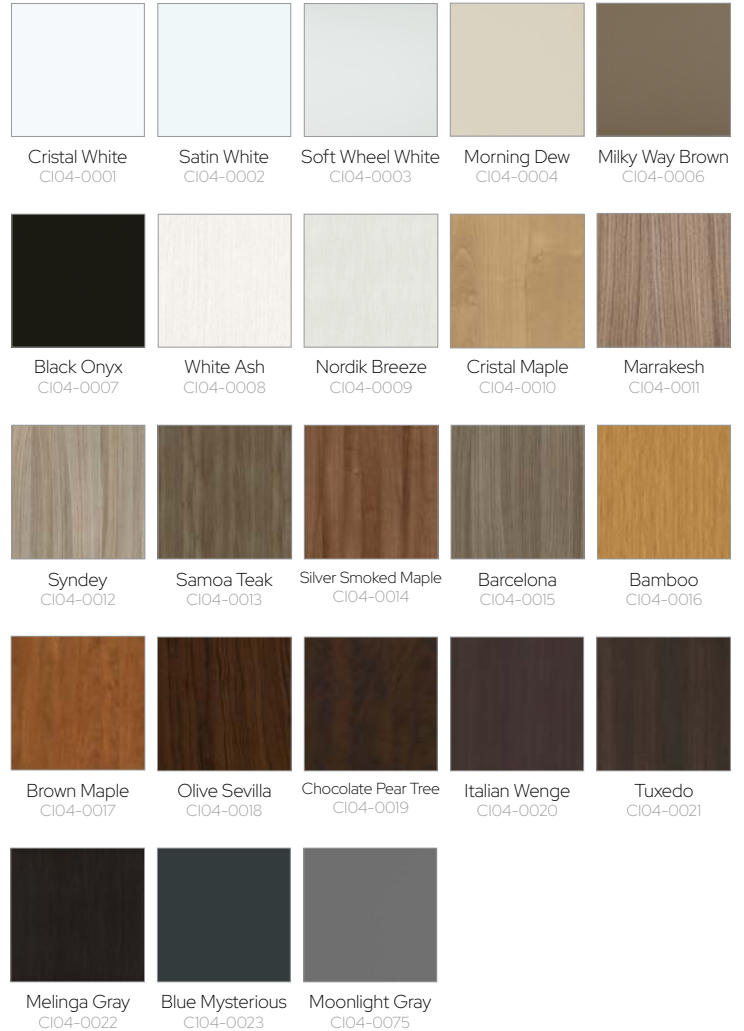


Slab style door and drawer front produced from 3/4" MDF core material, heat formed with thermofoil.

Back of door in white melamine. All products, except the door, will be in melamine match.

THERMOFOIL FINISHES

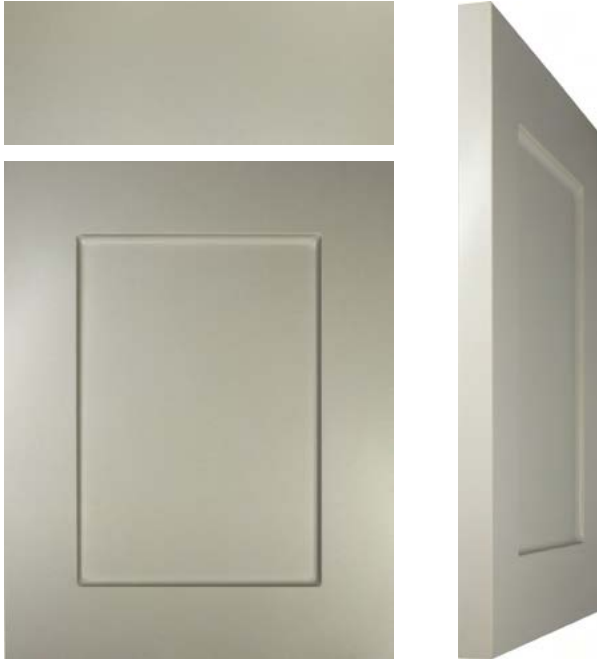
GROUP 04



DOOR SELECTIONS

775 AREZZO

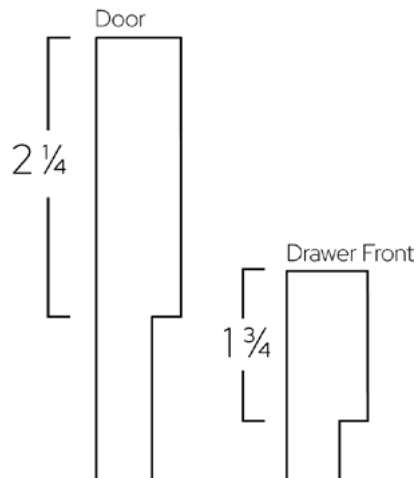
*DRAWER FRONT OP1 AS SHOWN



Shaker style door produced from 3/4" MDF core material, heat formed with thermofoil.

Door has the appearance of 2 1/4" stiles & rails. Back of door in white melamine.

All products, except the door, will be in melamine match.



SHAKER THERMOFOIL

THERMOFOIL FINISHES

GROUP 04



Optional Drawer Front OP4



DOOR SELECTIONS

778 MODENA

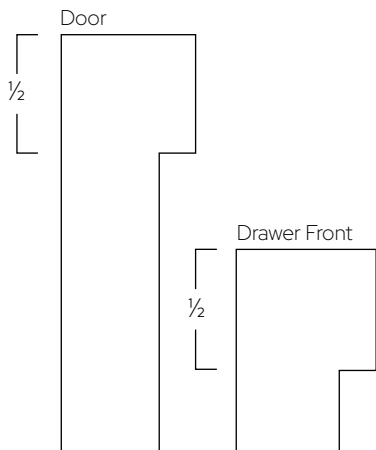
*DRAWER FRONT OP1 AS SHOWN



Micro-Shaker style door produced from 7/8" MDF core material, heat formed with thermofoil.

Door has the appearance of 1/2" stiles & rails. Back of door in white melamine.

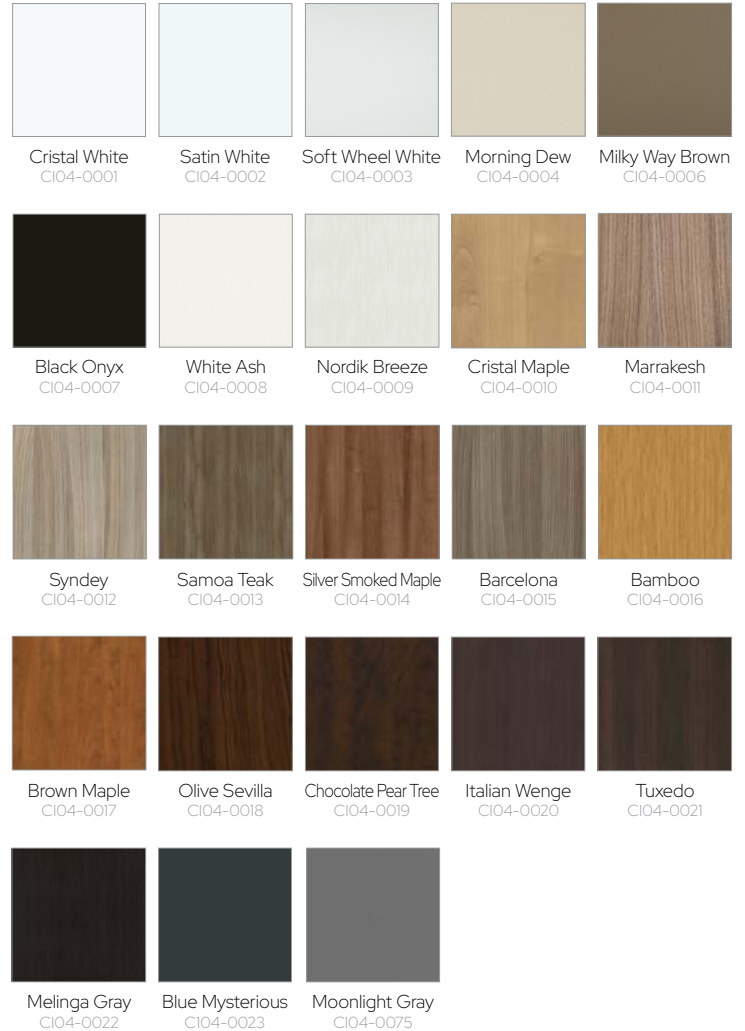
All products, except the door, will be in melamine match.



MICRO-SHAKER THERMOFOIL

THERMOFOIL FINISHES

GROUP 04



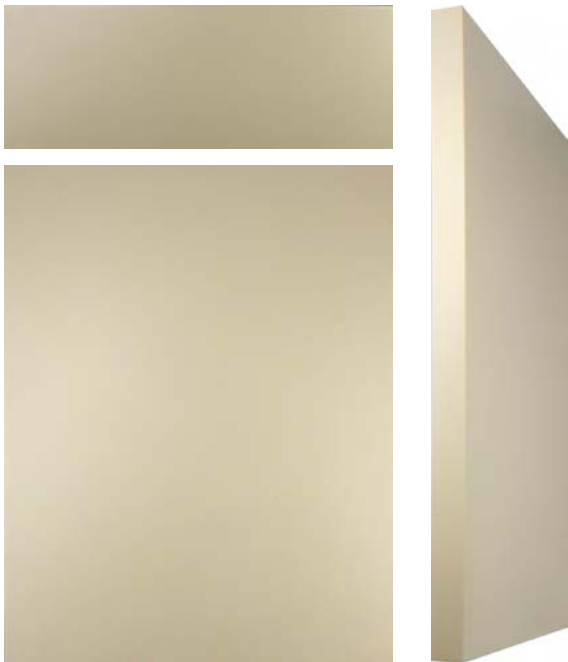
Optional Drawer Front OP4



DOOR SELECTIONS

200 BELMONT

SLAB - MDF 1 PIECE



AVAILABLE IN GROUP 05

LACQUER FINISHES:

Slab style door and drawer front produced from 3/4" MDF core material.

Door back options:

- White melamine
- Maple melamine
- Painted to match (extra cost)

405 BRISTOL

SHAKER - MDF 1 PIECE

*DRAWER FRONT OPT AS SHOWN



AVAILABLE IN GROUP 05

LACQUER FINISHES:

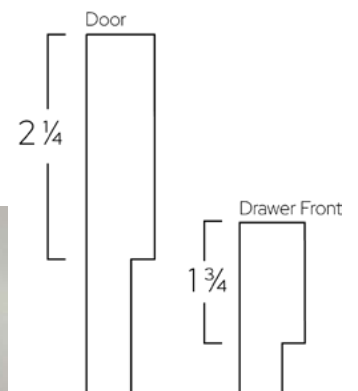
Shaker style door and drawer front produced from 3/4" MDF core material.

Door has the appearance of 2 1/4" rails & stiles.

Door back options:

- White melamine
- Maple melamine
- Painted to match (extra cost)

Optional Drawer Front OP4



DOOR SELECTIONS

108 STANBRIDGE

MICRO SHAKER - MDF 1 PIECE

*DRAWER FRONT OP1 AS SHOWN



AVAILABLE IN GROUP 05

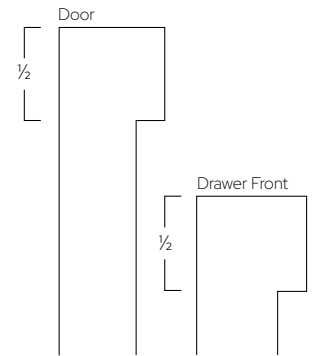
LACQUER FINISHES:

Door and drawer front are produced from 3/4" MDF core material. Door has the appearance of 1/2" stiles & rails.

Door back options:

- White melamine
- Painted to match (extra cost)

Optional Drawer Front OP4



LACQUER FINISHES 1 PIECE

GROUP 05



Frost
CI05-0001

Light Khaki
CI05-0002

Gray Owl
CI05-0003

Silver Half
CI05-0004

Spa
CI05-0005

Avocado
CI05-0006

Saint Martin
CI05-0007

Castle
CI05-0008

Space
CI05-0009

Bold Blue
CI05-0010



Charcoal
CI05-0011

DOOR SELECTIONS

200 BELMONT

SLAB WOOD VENEER



AVAILABLE IN GROUP 06

STAIN FINISHES:

Slab wood veneer door and drawer front produced from 3/4" particle core material with a 0,5 mm wood veneer edge, finished on all edges.

405 BRISTOL

WOOD SHAKER - TONGUE & GROOVE

*DRAWER FRONT OPT AS SHOWN

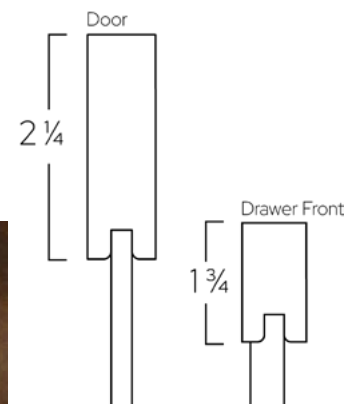


AVAILABLE IN GROUP 06

STAIN FINISHES:

Shaker style door produced from 3/4" wood and 1/4" veneer center panel with a 2 1/4" rails & stiles. (Tongue & groove construction)

Optional Drawer Front OP4



DOOR SELECTIONS

FINISH SELECTIONS FOR DOOR 200 AND 405

STAIN FINISHES MAPLE

GROUP 06



Natural
CI06-0001

Sunbleach
CI06-0003

Timberline
CI06-0004

Sweet Choco
CI06-0007

Iron Ore
CI06-0008

City Scape
CI06-0009

STAIN FINISHES BIRCH

GROUP 06



Provincial
CI06-0002

Marshlands
CI06-0005

Groundhog
CI06-0006



WARRANTY

At Cuisine Idéale™

We believe in producing the highest quality cabinet line available. We promise to manufacture the Cuisine Idéale™ cabinet with the highest standards of workmanship and the highest quality of materials available. We value you as a customer, and proudly stand behind your purchase with our Warranty. Cuisine Idéale™ warrants its products against defects in material and workmanship. Cuisine Idéale™'s commitment to quality and workmanship continues from our loading dock to your projects. This warranty does not apply to any damage or defect in a Cuisine Idéale™ cabinet that is: Caused by accident, abuse, misuse, or neglect. Due to natural wood features, conditions normally characteristic of the manufacturing or finishing process, or those matters referred to in the applicable specification manual; From hairline cracks at joints and in cabinets or wood doors in painted finishes; Changed or modified in any ways or which has been improperly installed; From improper storage; A result of any error in the design, layout, or measurement of the kitchen; In the event of replacement or repair of an item, Cuisine Idéale™ will use only the original order for wood species, finish etc. Due to excessive humidity (35%-65% recommended) or heat, water infiltration, abuse, acts of God, our products must be stored, installed and maintained at humidity levels that conform to the standards and norms set by the woodworking and furniture industry for finished products.

This warranty applies only to defects and does not apply to natural aging or mellowing of wood and wood finishes, or normal wear and tear. This warranty, further, applies only to ORIGINAL PURCHASER at the ORIGINAL SITE of installation.

General Warranty Guidelines

Cuisine Idéale™'s obligation is for the repair or replacement of the defective component and other components integrally associated with it. For a warranty claim, use the Cuisine Idéale™ Warranty Request Form and include the original Production Number. This Production Number is on record at Cuisine Idéale™; it is important for the customer to retain this number and to use it in all correspondence with Cuisine Idéale™. This Production Number allows Cuisine Idéale™ to respond promptly with correct replacement parts or materials. For any warranty claim, you need to provide a picture of the damage. On it, we have to see which cabinets your claim is about. Cuisine Idéale™ reserves the right of approving field repair, or returning the cabinet product to the factory for repair. However, any doors over 42" height or 24" wide is not warranty against distortion.

Field Repairs

Sometimes defects or errors can be corrected in the field. In these situations, you must receive advanced authorization from Cuisine Idéale™ if compensation is expected. Cuisine Idéale™ reserves the right to decide if a field repair is appropriate, or to arrange for the return of merchandise to the factory for rework. Cuisine Idéale™ may ask that an item considered defective be returned to the factory before it is replaced. If rework or modification is done before Cuisine Idéale™ has approved the Release Form for Credit, the distributor or customer will assume all costs involved in the rework or modification, and also will discharge Cuisine Idéale™ of any further responsibility in the matter.





NEW ENGLAND'S TRUSTED SOURCE

For Multi-Family Cabinets, Countertops
& Property Maintenance Supplies



Visit our website to learn how
we can help you complete your
next multi-family project.

(617) 313-5050

norfolkmultifamily.com